



## Virtual Primary Care — addressing gaps in care and improving outcomes for your members.



Offering high-quality, patient-centric preventive wellness screenings and routine care, including non-urgent medical conditions and ongoing care for chronic conditions including diabetes, asthma, and heart disease.

### MD Live Virtual Primary Care:

- + Addresses health equity concerns and reduces the number of members who go without care because they do not have a primary care physician or convenient access to one.
- + Closes gaps in care for those who have been care avoidant.
- + Allows health problems to be detected earlier, increasing the potential to address minor or manageable issues before they advance into chronic or complex conditions requiring increased treatment and greater spending.
- + Hassle-free, integrated imaging orders promote patient compliance for preventive screenings.

### A 3-part holistic solution



**Wellness screenings**, including a health risk assessment, vitals, lab orders and review, preventive health recommendations, and education, as well as referrals



**Routine care visits** for chronic condition management



**Health monitoring program**, which includes reminders and alerts from our chatbot



[engage@MDLive.com](mailto:engage@MDLive.com) | [MDLive.com](https://MDLive.com)

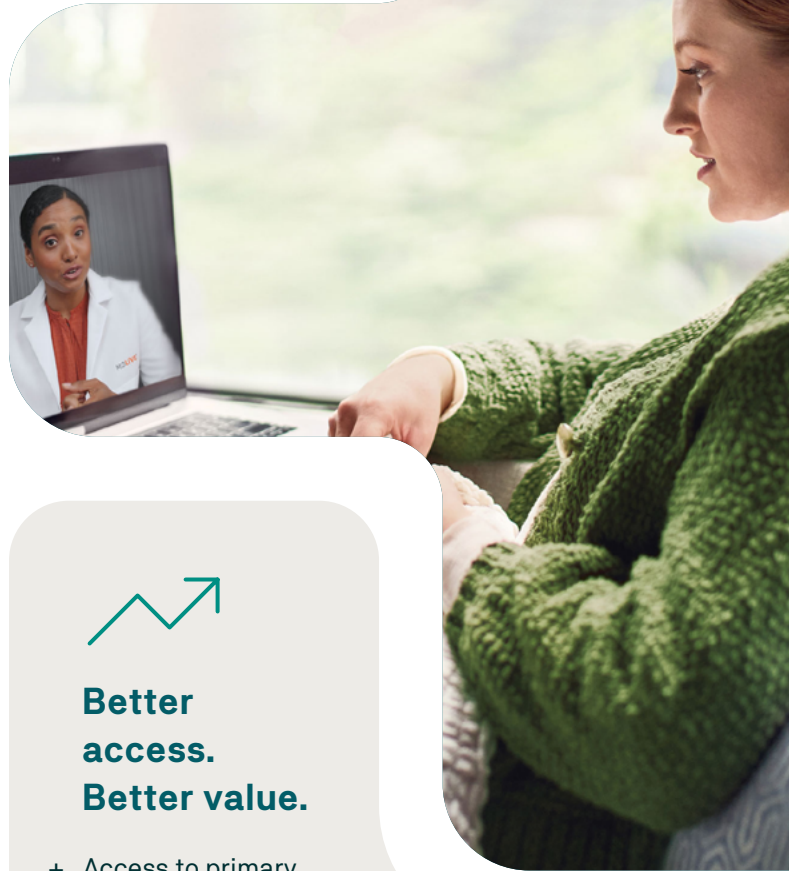


**MD Live**  
By EVERNORTH

## MD Live Virtual Primary Care advantages

- + **MD Live VPC fosters preventive care adoption** with virtual wellness screenings that can increase early identification of chronic conditions and encourage members to take appropriate steps in pursuit of healthier lifestyles.
- + **MD Live VPC offers smart referrals and on-formulary prescribing** — our providers leverage referral options to reduce costly out-of-network specialist care and diagnostic testing. And our Surescripts integration allows them to prescribe appropriate on-formulary medications for maximum efficacy and cost savings.
- + **MD Live VPC offers a flexible model.** Members without a regular PCP can find one through MD Live, and members who have an existing PCP relationship can visit MD Live as a convenient backup option. Results can be shared with their regular PCP for continuity of care.
- + **MD Live is built on a single, dynamic platform that is HiTrust certified.** Our growth is from product innovation rather than acquisition, so there are no issues surrounding compliance and security protocols for many disparate vendors.

All our services are HIPAA compliant.



**Better  
access.  
Better value.**

- + Access to primary care keep members out of emergency departments, where care costs are at least 4 times as much as other outpatient care.<sup>1</sup>
- + A growing body of evidence finds that greater primary care orientation is associated with better value: enhanced population health outcomes, greater equity, and more efficient use of healthcare resources.<sup>2</sup>



MD Live believes in the power of providing impactful and innovative health care to improve lives. Let's work together to deliver on that promise to your members.

+ [engage@MDLive.com](mailto:engage@MDLive.com) | [MDLive.com](https://MDLive.com) 

1. Why Do We Continue Using the ER for Care?, US News, 2015  
2. Primary Care Spending: High Stakes, Low Investment, Primary Care Collaborative, 2020